

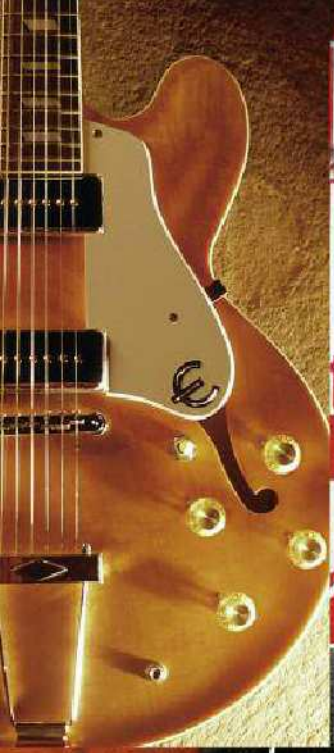


performance is our passion

Epiphone

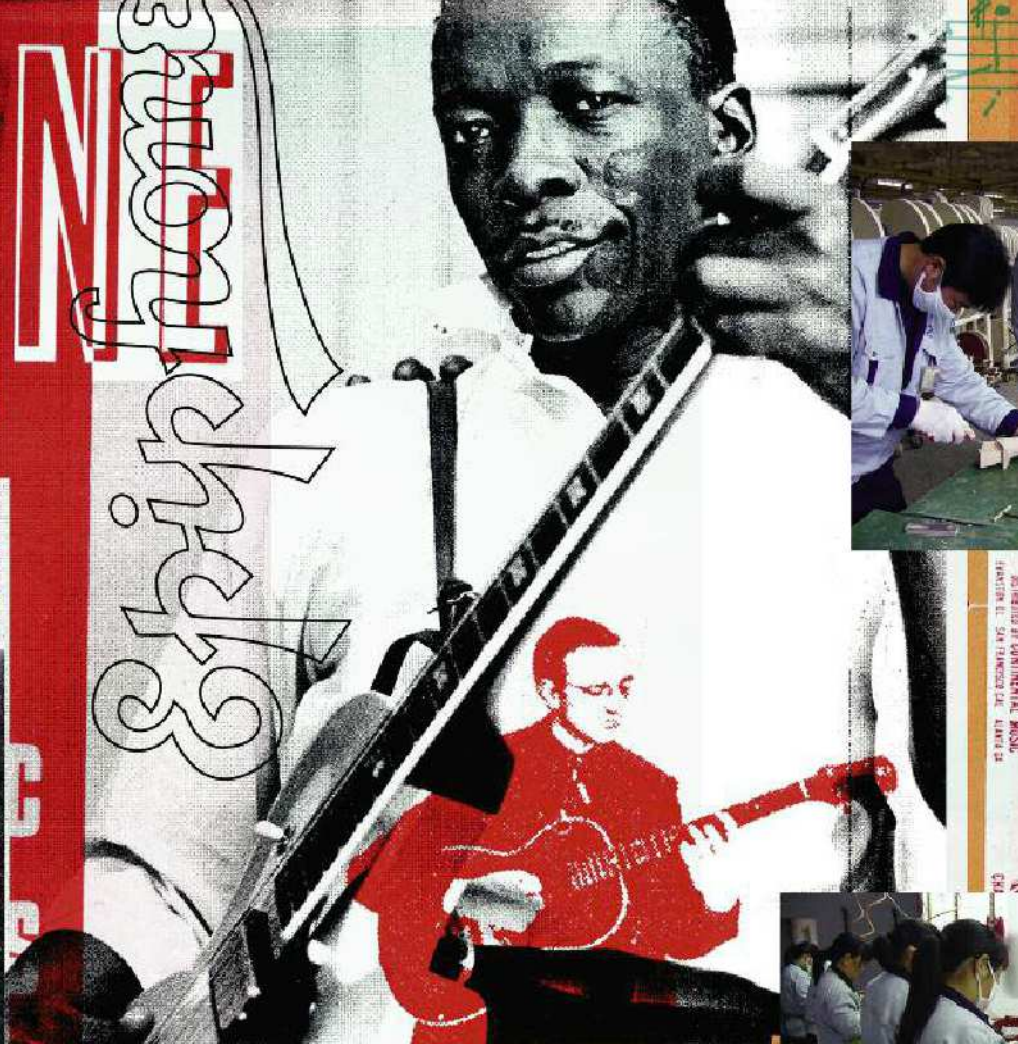
[www.epiphone.com](http://www.epiphone.com)

catalog 2011/2012



WORLDWIDE  
CONTINENTAL  
INSTRUMENTS

Epiphone



Those Prefer Blondes

The BLACKSTONE "Wood" Int. "1938"

The SPARTAN "Star Chamber" Int. "1938"

The TRIUMPH "Natural" Int. "1938"

GIBSON

青島吉泰樂有限公司



amps

EST"

EP

P

A

"PICT

504 504



Epiphone



All Epiphone products are guaranteed and backed by Gibson Musical Instruments 24/7 Customer Service at 1-800-444-2766 - Toll-Free USA only. In Europe at 00+800-444-2766-1. In China at 1-800-820-8841.

IM Gibson Customer Service at [customer.service1@gibson.com](mailto:customer.service1@gibson.com) See warranty card for details or visit [www.epiphone.com](http://www.epiphone.com). Guarantee varies country to country. Check your authorized Epiphone retailer for details.



**A**t Epiphone we like to think we are still "The House of Stathopoulos." Like the modern day Epiphone, Epi Stathopoulos was a fierce and scrappy competitor and innovator who was granted his first patent at the age of 22. Today, Epiphone continues Epi's tradition of making innovative breakthroughs and classic styles affordable to every musician. Our fans range from Les Paul to Tak Matsumoto, from the Beatles to Dwight Yoakam, from Joe Bonamassa to Slash and beyond. Epiphone instruments have always been made for the working musician whether you're performing five miles from home or 500.

Epiphone fans don't buy our instruments to hang on the wall or put in a glass case. Our instruments are built to be played. Sometimes Epiphone has innovated with new styles and new electronics. Other times, we've innovated by refining ideas readily available to other makers who just didn't try hard enough. Business has changed a lot since Epi set up his first showroom in New York City. Today, our instruments are played all over the world.

However at Epiphone, we know that if you sell instruments, you won't be in business long if you don't get to know the people who buy your instruments. We know our players. They own electric guitars, acoustic guitars, banjos, and mandolins for every occasion and we're the company that meets their every need.

We understand that musicians often look back before they go forward. That's why for every historical model we re-issue, we also give you something new. Not just new models but practical and revolutionary refinements like the Epiphone LockTone™ Stopbar and Tune-o-matic system or our new improved Tremotone™ Tremolo. While other guitar makers cling to one or two styles to hold their brand together, Epiphone has thrived on making a wide range of instruments for every music genre, from rock and bluegrass to jazz to metal.

And like our founder, we know you can't fool the customer. If we make a great instrument, musicians will tell everyone they know. If we make a poor instrument, they'll never let us forget it.

Since our merger with Gibson Musical Instruments in 1957, Epiphone has continued to innovate, experiment, and build on our mutual history of making quality instruments. Our innovations have also been felt in the business world. In 2002, Epiphone was the first American guitar company to design and build our own production factory in Qingdao, China. To meet the growing demand for great Epiphone instruments, a second factory was opened in 2008.

In some overseas instrument factories, you'll find the same parts and pickups used on many different brands. The only way to discern one company from another is the decal. At our Epiphone factory we only make Epiphone instruments.

Every Epiphone factory employs our own trained luthiers, designers, and a team of Quality Control experts who oversee all phases of production. With our main offices located in Nashville, Tennessee combined with inspection and distribution centers in the Netherlands and Japan, over 18 Entertainment and Artist relations offices worldwide, a global sales and distributor network, and our dedicated retail partners, Epiphone employs thousands of people around the globe dedicated to making every instrument we sell perfect. Our name is everything. And the success of our strategy can be measured in our unprecedented growth and superlative reviews.

In Epi's time, Gibson was Epiphone's greatest competitor. Now the two greatest guitar companies in the world are making the best instruments in the world. As part of the world famous Gibson family of brands, we are proud to provide you with exceptional instruments, 24/7/365 customer service, and great value. Epiphone's President Jim Rosenberg put it best: *"Epiphone is still the House of Stathopoulos. We're designers. We're players. We're mavericks. And, we're passionate about everything we do."*

Thank you for choosing Epiphone. To learn more about us, visit [www.epiphone.com](http://www.epiphone.com)

In order to continually improve the quality and/or performance of our instruments and/or to make use of the best available components, Epiphone reserves the right to change prices and specifications without notice.

The Epiphone Company • a part of the Gibson family of brands

645 Massman Drive • Nashville, Tennessee 37210 USA

**Epiphone**

# "Good musical



At Epiphone, we know that designing and building great looking guitars is only half the job. Epiphone's advanced electronics and hardware are a fundamental part of our worldwide reputation among players. We're constantly improving both our modern and classic designs. No other instrument company offers musicians greater variety and value over so many different products. At Epiphone, we understand your need for a performance instrument. Here are some of the features you'll find on our instruments:

**Locking Tune-o-matic™/Locking Stopbar™ System:** Fully adjustable, the Tune-o-matic remains a classic after over 50 years. And now, our updated patent pending design AUTO LOCKS the bridge and tailpiece in place with no tools needed. Unlike guitars fitted with tremolos, there are no tuning or restringing difficulties. Plus, tone and sustain are improved because all string vibrations are transferred directly to the guitar. Since their invention in 1954, the original stopbar and tune-o-matic have changed very little, which is a testament to their design quality and timeless functionality. Looking closely at this classic bridge/tailpiece combination that graces such legendary instruments as the Les Paul and the SG, it's easy to see why. Despite the success and integrity of the tune-o-matic/stopbar system, Epiphone conducted tests and experiments to see if and how this classic combination might be improved upon.

During string changes when all the strings are removed,

both the tune-o-matic bridge and the stopbar tailpiece can and often fall off of their anchor bolts. Without adversely affecting their classic appearance, our new Locking Tune-o-matic/Locking Stopbar System locks the stopbar and bridge onto the post without the need for tools. This system helps maintain intonation after string changes and the tighter contact with the anchor posts transfers greater string vibration to the wood body. Better sustain and better tone!

**Full Size Potentiometers:** We're passionate about performance. That's why our instruments use 1" diameter potentiometers for better throw, longer life, and reliable service.

**Angled Headstock:** Unlike less costly designs, most Epiphone instruments feature a 14 degree headstock that gives you more pressure at the nut so you can get more sustain with less tuning hangups caused by string tree gadgets.

**ProBucker™ and Alnico Classic Pro™ Pickups:** A great pickup is more than the sum of its parts. The interactions and specifications of each part play a vital role in the overall tonal response of the pickup. To ensure that the magic of early Gibson humbuckers was captured, every part used in building these pickups was carefully considered and new tooling created. New injection molds were created to Gibson specifications to produce the coil forms. The coils are wound with the highest quality magnet wire available from Elekrisola. High quality 18% Nickel Silver is used for the newly tooled base plates and covers. The pole

# instruments do not just happen"

Epaminondas "Epi" Stathopoulos



screws, slugs, Alnico magnet and pole shoes are also manufactured to Gibson specifications using the exact materials used on the great humbuckers of the past. Even the screws used to secure the coils to the base plate were carefully considered and brass screws chosen to prevent any interference with the pickups magnetic field.

The ProBucker™ pickups use unmatched coils to capture the nuance of the early PAF™ pickups manufactured by Gibson in the late '50s. The bite created by the uneven coils is evened out by the use of an Alnico II magnet to add just the right amount of smooth vintage creaminess that has defined rock and roll for decades.

The Alnico Classic Pro uses matched coils wound to vintage specifications to produce a truly outstanding pickup with a rich vintage tone. Plenty of clarity and top end response with just the right amount of humbucker muscle when you need it.

**The Tremotone™ Tremolo:** Based on the classic Tremotone design of the 60s, the new and improved Tremotone takes all the great looks and features of the original and improves the design for better functionality and durability. The original design featured a pin used for the string bar and cylinder to flex on and provide variations in pitch. The original part, as found on the original 1961 Casino for instance, in some cases broke, leaving the tremolo completely non-functional. Epiphone has upgraded the design to a spring method which provides solid tuning stabil-

ity without changing the looks. Still cool. Still all Epiphone.

**Quick Connector:** For unequalled reliability as well as ease of service, Epiphone wiring harnesses feature quick connectors.

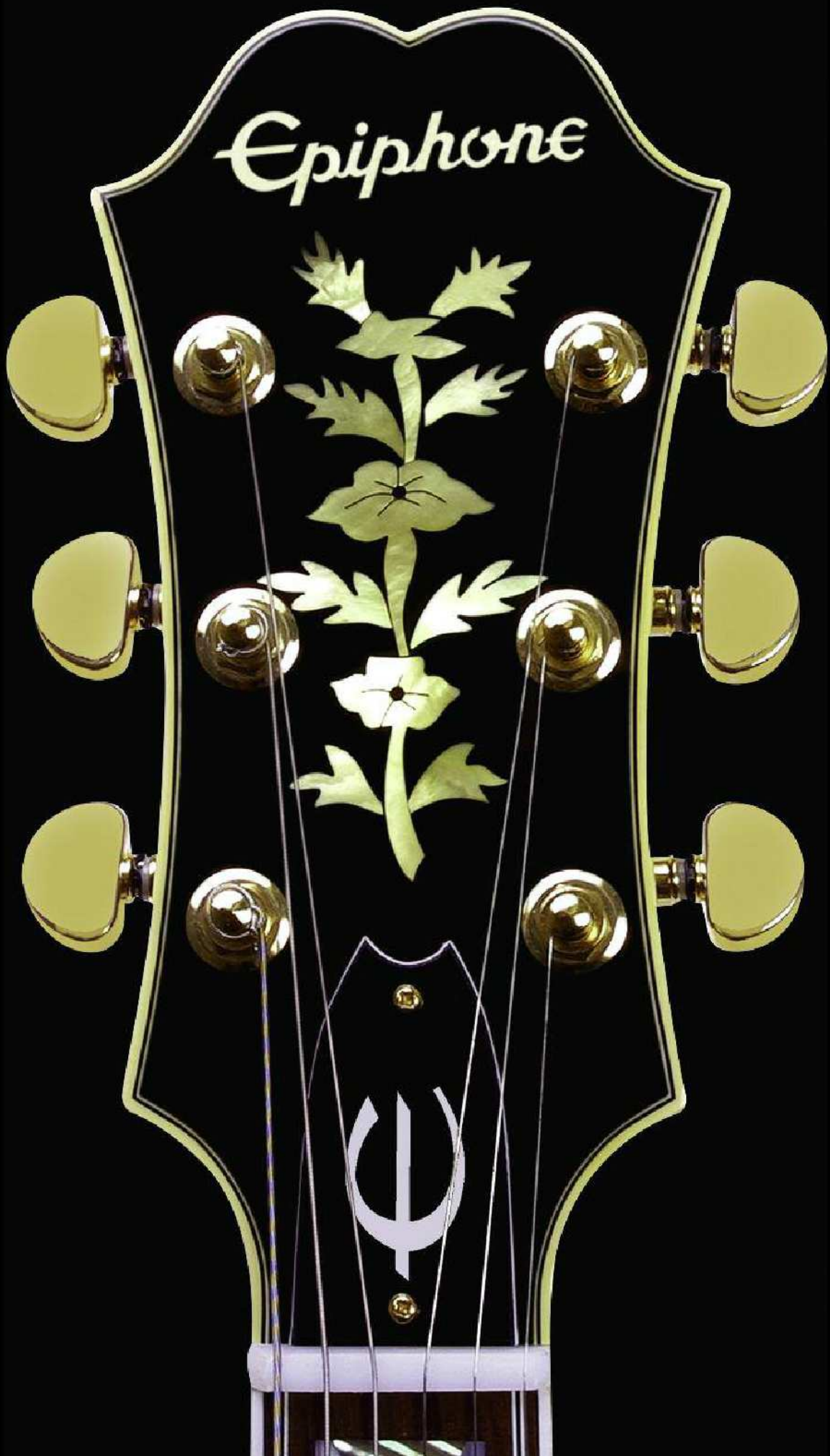
**All Metal Toggle Switch:** Proven for years to be the most reliable, our all-metal toggle switches use rugged spring-steel contacts to ensure years of reliable service and performance.

**"No Spin" Output Jack:** To increase reliability and ensure consistent performance, our proprietary output jacks feature an improved contact shape and heavy-duty spring steel. Also the "no spin" design used on many of our instruments prevents problems created when output jacks become loose and spin in the output jack plate. Many times this common occurrence can compromise solder connections to the jack.

**Grover™ Machine Heads:** Most Epiphone guitars and basses feature premium, precision tuners for ease of use, excellent tuning stability, and long life.

*"Good musical instruments do not just happen,"*  
Epi Stathopoulos once said. And he was right.

Epiphone®  
performance is our passion



**MODEL 50th Anniversary '61 Casino TD**

**HARDWARE** Nickel  
**SCALE** 24.75"  
**NUT WIDTH** 1.68"  
**NECK** Set  
**NECK MATERIALS** Mahogany  
**BODY WOOD** Maple/Birch Laminate  
**TOP WOOD** Maple/Birch Laminate  
**FNGRBRD WOOD** Rosewood  
**BRIDGE PICKUP** Gibson USA P-90T  
**NECK PICKUP** Gibson USA P-90R  
**COLORS** RT, VS

**MODEL 50th Anniversary '61 Casino TDV**

**HARDWARE** Nickel Tomotone  
**SCALE** 24.75"  
**NUT WIDTH** 1.68"  
**NECK** Set  
**NECK MATERIALS** Mahogany  
**BODY WOOD** Maple/Birch Laminate  
**TOP WOOD** Maple/Birch Laminate  
**FNGRBRD WOOD** Rosewood  
**BRIDGE PICKUP** Gibson USA P-90T  
**NECK PICKUP** Gibson USA P-90R  
**COLORS** VS

**MODEL Dot Royale**

**HARDWARE** Gold  
**SCALE** 24.75"  
**NUT WIDTH** 1.68"  
**NECK** Set  
**NECK MATERIALS** Mahogany  
**BODY WOOD** Maple Laminate  
**TOP WOOD** Maple Laminate  
**FNGRBRD WOOD** Rosewood  
**BRIDGE PICKUP** Alnico Classic™  
 Plus HB  
**NECK PICKUP** Alnico Classic™ HB  
**COLORS** PV

**MODEL Wildkat Royale**

**HARDWARE** Gold/Bigsby  
**SCALE** 24.75"  
**NUT WIDTH** 1.68"  
**NECK** Set  
**NECK MATERIALS** Mahogany  
**BODY WOOD** Mahogany  
**TOP WOOD** Maple  
**FNGRBRD WOOD** Rosewood  
**BRIDGE PICKUP** Dogear P-90 Classic™  
**NECK PICKUP** Dogear P-90 Classic™  
**COLORS** PV

### Limited Edition 50th Anniversary "1961" Casino™ TD Outfit

Epiphone brings back the first Casino in celebration of its 50th anniversary - the "1961" Casino. Including the pre-Gibson era triangle metal logo badge on the headstock, Epiphone has faithfully reproduced the features not found on Casinos produced after 1961. Attention to detail includes the correct "burst" patterns on front and back, a neck joint at the 16th fret (instead of the 17th), vintage style tuners with small plastic buttons and the historically accurate rectangle "blue label" inside the sound hole. In the neck position is a Gibson USA P-90R dog-ear pickup and in the bridge position is the Gibson USA P-90T. They feature vintage two-conductor, braided, shielded wiring and black plastic covers and offer a stellar combination of high output and biting treble response. Other electronics faithful to the original include a Switchcraft™ 3-way toggle and 1/4" output jack. The body is made of 5-layer Maple/Birch with a solid Mahogany SlimTaper™ neck attached using the traditional mortise and tenon neck joint hand-fitted and glued to the body using TiteBond™ glue. Hardware includes a tune-o-matic bridge and your choice of either a Trapeze tailpiece (TD) or Epiphone's new reissue of the original Tremotone™ vibrato (TDV). To top it all off, each 1961 Casino features an original-style hard case with gray exterior and blue plush interior and a numbered certificate of authenticity.



**Dot™ Royale** The Epiphone Dot was introduced over ten years ago, and since then, Epiphone's version of the venerable Gibson ES-335 "Dot" has been wowing guitar players all over the world. Now, the Dot Royale gives the ES-335 Dot tradition a whole new makeover with a stunning pearl white finish, gold sparkle binding and gold hardware totally unlike anything Epiphone has offered before. The Dot Royale is constructed of premium laminated Maple including a Mahogany center block and a hand-fitted, glued-in Mahogany neck. Other details include a Rosewood fingerboard with traditional "Dot" inlay, quality electronic parts including full-size, 1" 500K Ohm potentiometers, Epiphone's all-metal pickup selector switch, and heavy-duty output jack. Its fabulous semi-hollowbody sound is voiced by a pair of real Alnico Classic™ Humbucker pickups. The Royale Dot sports gold hardware including premium 16:1 ratio Grover® machine heads for superior tuning stability and accuracy.

**Wildkat™ Royale** Epiphone was never afraid to do something out of the ordinary. With no notable changes in Archtop design by anybody in decades, Epiphone took the Archtop and practically married it to a solid body guitar. The Wildkat Royale now takes its place among our all-time great designs. The Wildkat Royale's innovative design starts with a solid piece of warm, sustain-rich Mahogany that is computer-routed to create an acoustic guitar-like body except with a "center block" area like an ES-335. The body is then covered with a beautiful pearl white finish with gold sparkle binding and gold hardware to create a semi-hollow body masterpiece. It features a Rosewood fingerboard and an authentic gold B70 licensed Bigsby® vibrato for even more sonic versatility. The vintage voice of this 'Kat comes from a pair of Epiphone gold "dog ear" P-90 Classic pickups. All of this great design comes together with fabulous vintage semi-hollow tone and great sustain plus, being slightly larger than a Les Paul and smaller than an ES-335 size, it's lightweight and really comfortable to play!



new

Limited Edition Dot™ Royale



new

Limited Edition Wildkat™ Royale



archtops

Epiphone®  
performance is our passion



### Emperor Swingster™

What do you want to play today? No matter what your musical direction is today, the NEW Emperor Swingster™ can take you there. With professional features including series/parallel switching for a wide range of both humbucker and single-coil tones and a Bigsby™ tremolo with a pinned, roller-saddle Tune-o-matic bridge for accurate return-to-pitch and super smooth performance, it's a guitar that's perfect for a wide range of musical styles. So go ahead, play what you want. With the Emperor Swingster, the choice now is yours.

MODEL	<b>Swingster</b>
HARDWARE	Chrome Bigsby
SCALE	24.75"
NUT WIDTH	1.68"
NECK	Set
NECK MATERIALS	3-pc Maple
BODY WOOD	Maple Laminate
TOP WOOD	Select Spruce
FNGRBRD WOOD	Rosewood
BRIDGE PICKUP	Swingbucker™ Plus
NECK PICKUP	Swingbucker™
COLORS	OR, TB, WR

MODEL	<b>Broadway</b>
HARDWARE	Gold
SCALE	25.50"
NUT WIDTH	1.68"
NECK	Set
NECK MATERIALS	Maple
BODY WOOD	Maple Laminate
TOP WOOD	Select Spruce
FNGRBRD WOOD	Rosewood
BRIDGE PICKUP	Alnico Classic™ HB
NECK PICKUP	Alnico Classic™ HB
COLORS	NA

MODEL	<b>Joe Pass Emperor II</b>
HARDWARE	Gold
SCALE	24.75"
NUT WIDTH	1.68"
NECK	Set
NECK MATERIALS	3-pc Maple
BODY WOOD	Maple Laminate
TOP WOOD	Select Spruce
FNGRBRD WOOD	Rosewood
BRIDGE PICKUP	Alnico Classic™ HB
NECK PICKUP	Alnico Classic™ HB
COLORS	NA, VS

MODEL	<b>Emperor Regent</b>
HARDWARE	Gold
SCALE	25.50"
NUT WIDTH	1.68"
NECK	Set
NECK MATERIALS	Maple
BODY WOOD	Maple Laminate
TOP WOOD	Select Spruce
FNGRBRD WOOD	Rosewood
BRIDGE PICKUP	None
NECK PICKUP	Floating 700R Mini-HB
COLORS	NA

MODEL	<b>ES-175 Reissue</b>
HARDWARE	Nickel
SCALE	24.75"
NUT WIDTH	1.68"
NECK	Set
NECK MATERIALS	Mahogany
BODY WOOD	Maple Laminate
TOP WOOD	Maple Laminate
FNGRBRD WOOD	Rosewood
BRIDGE PICKUP	Alnico Classic™ HB
NECK PICKUP	Alnico Classic™ HB
COLORS	VS

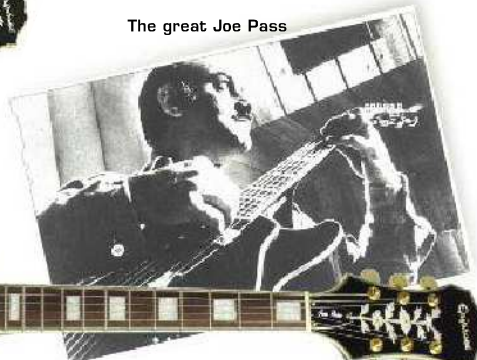
MODEL	<b>Wildkat (with Bigsby)</b>
HARDWARE	Nickel/Bigsby
SCALE	24.75"
NUT WIDTH	1.68"
NECK	Set
NECK MATERIALS	Maple
BODY WOOD	Mahogany Laminate
TOP WOOD	Maple Laminate
FNGRBRD WOOD	Rosewood
BRIDGE PICKUP	Dogear P-90 Classic™
NECK PICKUP	Dogear P-90 Classic™
COLORS	AN





Broadway™

The great Joe Pass



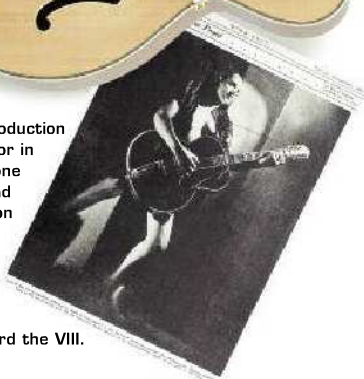
Joe Pass Emperor II™

Emperor Regent™



Offering up the "playful" side of Epiphone advertising, the introduction of a trio of archtop acoustics in "blond" natural finish.

With the introduction of the Emperor in 1937, Epiphone devised this ad to capitalize on America's fascination with the abdication of the throne by King Edward the VIII.



ES-175 Reissue

**Broadway™** The Broadway features the same big body of its sister the Emperor Regent, but has two full-size Humbucking pickups plus individual volume and tone controls as well as a 3-way pickup selector switch. With it's origins in Epiphone's famed acoustic archtops of the 30's, this premium big-box is perfect for jazz or the blues.

**Joe Pass Emperor II™** Late guitar legend Joe Pass lends his name to one of our most popular archtops. The comfortable to play Emperor II is slightly smaller in dimensions than the jumbo Jazz-boxes, and features a single trapeze tailpiece for traditional styling and twin Humbucking pickups for unmatched tone.

**Emperor Regent™** Back in the day of the big bands, guitars got bigger so they would be louder and heard over the horn section. Epiphone answered that call with big, beautiful Jazz-boxes like the Emperor Regent. A select Spruce top and a floating Mini-Humbucking pickup at the neck give the Regent a warm, rich sound with enough acoustic volume to stand out in a crowd – plugged or unplugged. *One of the "100 Best Buys"- Guitar Player, Nov, 1997*

**ES-175 Reissue** This popular Jazz and Blues guitar is back and better than ever! Our faithful reissue has two Alnico-V Classic Humbucking pickups and a laminated Maple top and body with individual volume and tone controls for a wide range of sounds – from dark, rich jazz (neck pickup) to crisp, powerful blues (bridge pickup) and everything in-between.

**Wildkat™** The Wildkat is from Epiphone's exclusive "Kat" family of electric hollow-bodies. These guitars are larger in size than a Les Paul, but still smaller in size compared to a Dot 335. This version features a Bigsby vibrato and classic "dogear" P-90 pickup tone for a look and sound that can't be tamed!



Wildkat™



Guitar Player Editors' Pick Award

archtops



### Elitist 1965 Casino™ Outfit

Perhaps the guitar most associated with Epiphone, the now legendary Casino made its debut in 1961. It's all-hollow lightweight body construction with twin USA P-90 pickups provide the signature sound most associated today with The Beatles. This made in Japan reissue features a 5-ply Maple top, back and sides, Nickel hardware, USA electronics and Grover machine heads. If you don't have a Casino in your collection, you're missing a truly unique experience. Includes a Deluxe Elitist Hard Case with plush dark blue lining.

MODEL **Elitist Casino**  
HARDWARE Nickel  
SCALE 24.75"  
NUT WIDTH 1.625"  
NECK Set  
NECK MATERIALS 1-pc Mahogany  
BODY WOOD 5-Ply Maple  
TOP WOOD 5-Ply Maple  
FNGRBRD WOOD Rosewood  
BRIDGE PICKUP Gibson USA P-90  
NECK PICKUP Gibson USA P-90  
COLORS VS, NA

**Gibson**  
GEAR

P-90  
Single  
Coils

MODEL **B.B. King Lucille**  
HARDWARE Gold  
SCALE 24.75"  
NUT WIDTH 1.68"  
NECK Set  
NECK MATERIALS Maple  
BODY WOOD Maple Laminate  
TOP WOOD Maple Laminate  
FNGRBRD WOOD Rosewood  
BRIDGE PICKUP Alnico Classic™ HB  
NECK PICKUP Alnico Classic™ HB  
COLORS EB

MODEL **The Dot**  
HARDWARE Nickel  
SCALE 24.75"  
NUT WIDTH 1.68"  
NECK Set  
NECK MATERIALS Mahogany  
BODY WOOD Maple Laminate  
TOP WOOD Maple Laminate  
FNGRBRD WOOD Rosewood  
BRIDGE PICKUP Alnico Classic™ HB  
NECK PICKUP Alnico Classic™ HB  
COLORS CH, EB, NA, VS  
Other Left Handed - CH

MODEL **Sheraton II**  
HARDWARE Gold  
SCALE 24.75"  
NUT WIDTH 1.68"  
NECK Set  
NECK MATERIALS Maple  
BODY WOOD Maple Laminate  
TOP WOOD Maple Laminate  
FNGRBRD WOOD Rosewood  
BRIDGE PICKUP Alnico Classic™ HB  
NECK PICKUP Alnico Classic™ HB  
COLORS EB, NA, VS  
Other Left Handed - CH

MODEL **Nick Valensi  
Riviera P-94**  
HARDWARE Gold  
SCALE 24.75"  
NUT WIDTH 1.625"  
NECK Set  
NECK MATERIALS 1-pc Mahogany  
BODY WOOD 5-Ply Maple Laminate  
TOP WOOD 5-Ply Maple Laminate  
FNGRBRD WOOD Rosewood  
BRIDGE PICKUP Gibson P-94T  
NECK PICKUP Gibson P-94R  
COLORS AN

MODEL **Casino**  
HARDWARE Nickel  
SCALE 24.75"  
NUT WIDTH 1.68"  
NECK Set  
NECK MATERIALS Mahogany  
BODY WOOD Maple Laminate  
TOP WOOD Maple Laminate  
FNGRBRD WOOD Rosewood  
BRIDGE PICKUP Dogear P-90 Classic™  
NECK PICKUP Dogear P-90 Classic™  
COLORS CH, NA, VS

B.B. King and his Lucille

B.B. King Lucille™



**Vari-Tone Control**

This control works through a reduction of the fundamental harmonic frequencies. The higher the setting, the greater the loss of "lows". Positions 3 & 4 produce a sound similar to a single-coil.

**Position 1: Bypass**

**Position 2: 5db at 1950 hz**

**Position 3: 12db at 1100 hz**

**Position 4: 16db at 620 hz**

**Position 5: 18.5db at 360 hz**

**Position 6: 21db at 120 hz**



The Dot™ (ES-335)

**B.B. King Lucille™** You can own a legendary guitar. Designed by the reigning "King of the Blues" himself, B. B. King, the Lucille is similar to the ES-335 semi-hollowbody guitar but without f-holes. The result is a guitar with a very unique voice that is less prone to feedback at high volume levels. It also features a TP-6 fine-tuning tailpiece, two humbucking pickups, six position Vari-tone switch and stereo outputs. To top it off, her name is elegantly inlaid in mother-of-pearl on the headstock.

**The Dot™** The ES semi-hollow body guitars from Gibson first appeared in 1958. Since then the ES-335 "Dot" has been a must-have guitar in every arsenal. Our version, the Epiphone Dot, makes this icon guitar available to players everywhere. It features twin Humbucking pickups and the Tune-o-matic™ bridge/Stopbar tailpiece combo for great tone and sustain. (Also available Lefty, CH)

**Sheraton™ II** "A price/performance ratio that seems too good too be true." - *Guitar World, Dec. 1994* Our highly rated Sheraton II is fully appointed and a dream to play. This classic semi-hollow body guitar features all the top-of-the-line Epi styling and combines the sustain of a solid-body and the warmth of a hollow-body. (Also available Lefty, VS)

**Nick Valensi Riviera P-94** The guitarist from acclaimed New York band The Strokes lends his name and approval to an all new Riviera. This guitar is based on Nick's 90's "Riv" which he fitted with Gibson P-94s to obtain his unique signature sound. The Gibson P-94 uses the same enamel coated vintage wire and Alnico-V magnets as the P-90 but in a traditional humbucker-size housing. The P-94 has higher output and more sustaining qualities than single-coil pickups and gives plenty of bite when needed. Yet the "94s" have enough response to allow subtle nuances for enhanced dynamics. Check out [www.TheStrokes.com](http://www.TheStrokes.com) for tour and band info.

**Casino™** Undoubtedly, one of Epiphone's greatest contributions to music, the Casino is famous for its sparkling sound heard on some of the most revered records in history. More popular today than ever, its secret is its thin-line full-hollow construction, twin P-90 pickups and Mahogany set-neck.

John Lee Hooker



Sheraton™ II



Nick Valensi Riviera™ P-94



**Gibson**  
GEAR P-94  
Single Coils

Casino™



archtops

Epiphone  
**Epiphone**  
performance is our passion



MODEL **Inspired by John  
Lennon Casino Outfit**  
HARDWARE Nickel/Gold  
SCALE 24.75"  
NUT WIDTH 1.68"  
NECK Set  
NECK MATERIALS Mahogany  
BODY WOOD Maple Laminate  
TOP WOOD Maple Laminate  
FNGRBRD WOOD Rosewood  
BRIDGE PICKUP Gibson USA EP-90T  
NECK PICKUP Gibson USA EP-90R  
COLORS LN, VS

MODEL **Tom DeLonge ES-333**  
HARDWARE Nickel  
SCALE 24.75"  
NUT WIDTH 1.68"  
NECK Set  
NECK MATERIALS Mahogany  
BODY WOOD Maple Laminate  
TOP WOOD Maple Laminate  
FNGRBRD WOOD Rosewood  
BRIDGE PICKUP Gibson Dirty Finger™  
NECK PICKUP None  
COLORS BR

MODEL **Worn Dot Studio**  
HARDWARE Black  
SCALE 24.75"  
NUT WIDTH 1.68"  
NECK Set  
NECK MATERIALS Maple  
BODY WOOD Maple Laminate  
TOP WOOD Maple Laminate  
FNGRBRD WOOD Rosewood  
BRIDGE PICKUP Alnico Classic Plus™  
NECK PICKUP Alnico Classic™ HB  
COLORS WC, WS

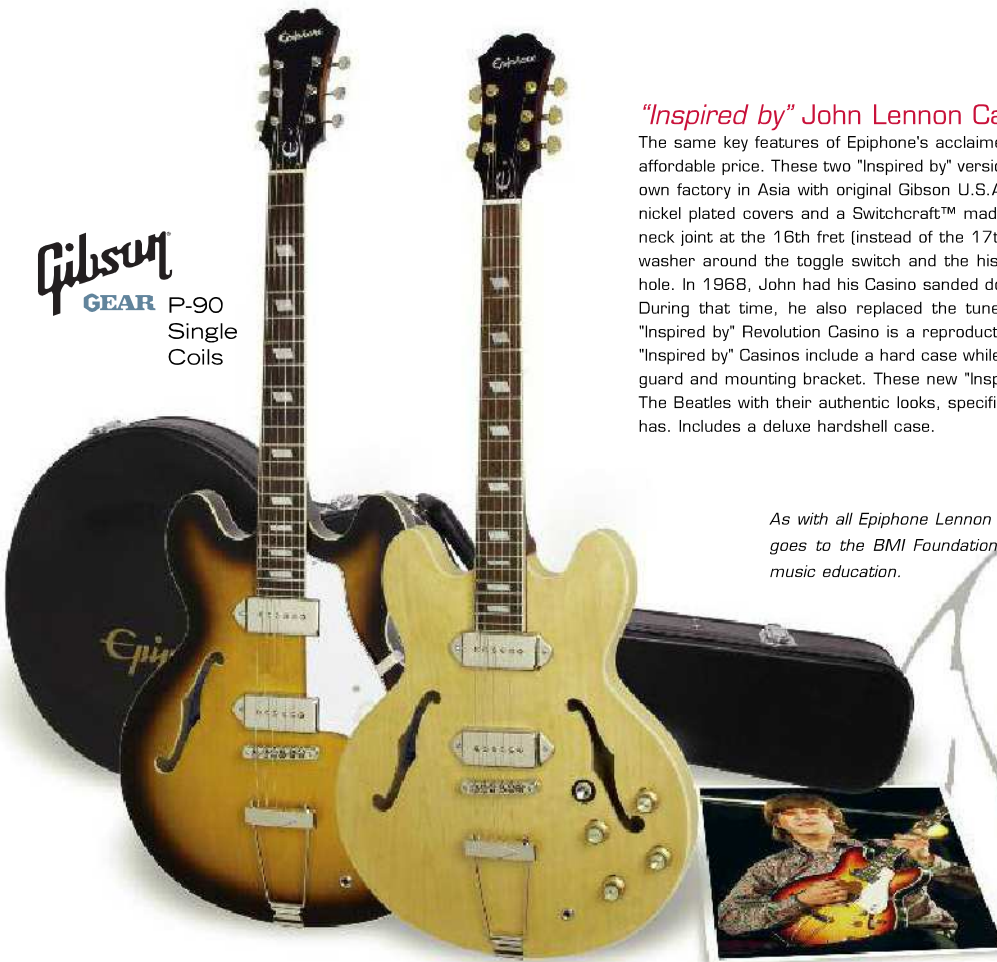
**Gibson**  
GEAR

P-90  
Single  
Coils

### "Inspired by" John Lennon Casino™ Outfit

The same key features of Epiphone's acclaimed John Lennon Signature U.S.A. Casinos but at a more affordable price. These two "Inspired by" versions combine the cost-effective workmanship of Epiphone's own factory in Asia with original Gibson U.S.A. electronics including classic P-90 pickups with dogear, nickel plated covers and a Switchcraft™ made toggle and output jack. Attention to detail includes the neck joint at the 16th fret (instead of the 17th), vintage style tuners with small metal buttons, a black washer around the toggle switch and the historically accurate rectangle "blue label" inside the sound hole. In 1968, John had his Casino sanded down to the bare wood and covered with a thin, dull finish. During that time, he also replaced the tuners with Gold Grovers and removed the pickguard. The "Inspired by" Revolution Casino is a reproduction of this stripped guitar as it also remains today. Both "Inspired by" Casinos include a hard case while the Revolution version also includes the unattached pickguard and mounting bracket. These new "Inspired by" Casinos capture the essence of the 1960's and The Beatles with their authentic looks, specifications and one-of-kind sound and feel that only a Casino has. Includes a deluxe hardshell case.

As with all Epiphone Lennon guitars, a portion of the proceeds from the sale of each goes to the BMI Foundation for the John Lennon Scholarship Fund which supports music education.



**Tom Delonge Signature ES-333** Built to the Blink-182 guitarist's specifications, the semi-hollow body combines traditional ES construction and styling with the high-output tone and crunch of a Gibson USA Dirty Fingers™ humbucking pickup. This now legendary semi-hollow body design allows for a combination of solid-body sustain and acoustic-like resonance. However, Tom's guitar takes a different direction with the installation of only one very high-output Gibson Dirty Fingers humbucking pickup mounted in the bridge position that is capable of producing unprecedented distortion yet excellent clarity at high volumes. In addition to a "non standard" pickup controlled by only one volume knob, the Tom Delonge sports a non-traditional cream colored racing stripe down the center on a brown body. A natural finished, Mahogany neck with a glued-in neck joint is attached to the body at the 17th fret and includes a Rosewood fingerboard with mother-of-pearl "dot" inlays. Sustain, tone and tuning stability are maintained by Epiphone's new LockTone™ tune-o-matic/stopbar system and precision Grover™ machine heads.

**"Worn" Dot™ Studio** Epiphone's DOT Studio brings new "stripped down" looks, new functionality and new affordability to Epi's semi-hollowbody electric guitars. The hot, open-coil Alnico-V humbucking pickups and simplified electronics - just a single tone and single volume control - make this guitar a ready-rocker with killer value!

### Tom Delonge Riviera™ ES-333

### Worn Dot™ Studio



**Gibson**  
GEAR Dirty Fingers™

archtops

Epiphone  
**Epiphone**  
performance is our passion



# Les Paul

## MODEL

**MODEL** Les Paul Ultra-III  
**HARDWARE** Nickel  
**SCALE** 24.75"  
**NUT WIDTH** 1.65"  
**NECK** Set  
**NECK MATERIALS** Mahogany  
**BODY WOOD** Mahogany  
**TOP WOOD** Flame Maple  
**FNGRBRD WOOD** Rosewood  
**BRIDGE PICKUP** ProBucker™-3 HB  
**NECK PICKUP** ProBucker™-2 HB,  
NanoMag™  
**COLORS** FC, ME, MS, VS  
**INCLUDES** Native Instruments™  
GuitarRig™ Software  
3 Meter USB Cable  
9 Volt Battery

**MODEL** Les Paul Standard  
**PlusTop**  
**HARDWARE** Nickel  
**SCALE** 24.75"  
**NUT WIDTH** 1.68"  
**NECK** Set  
**NECK MATERIALS** Mahogany  
**BODY WOOD** Mahogany  
**TOP WOOD** Flame Maple  
**FNGRBRD WOOD** Rosewood  
**BRIDGE PICKUP** Alnico Classic™ HB  
**NECK PICKUP** Alnico Classic™ HB  
**COLORS** HB, HS, TA, TL, VS

# ULTRA™ -III

new



Shadow™ NanoMag™ pickup



NanoMag™ controls & 9 volt battery compartment located on cavity access panel



Three different outputs



Pickup Ring mounted Chromatic Tuner

**Les Paul® Ultra-III** We all know that deep down, most guitarists are traditional. That's why we designed the new Les Paul Ultra-III with the same look and features of a traditional Les Paul but with new technology. At the heart of the new Ultra-III are two pickup systems. Powering the first are Epiphone's new ProBucker™ humbucking pickups patterned after Gibson's famous BurstBuckers™. With authentic 18% nickel silver base and cover, Elektrisola wire, accurate bobbins, slugs and screws and sand casted Alnico-II magnets, they replicate that classic "Patent Applied For" airy tone that defined rock and roll. The second system features Shadow™ Germany's patented NanoMag™ pickup embedded discretely at the end of the fingerboard. Featuring samarium cobalt magnets, an air coil and active electronics, this low-impedance pickup captures all the body acoustics and string harmonics. Together, you get humbucker-driven rock crunch as well as shimmering acoustic-like tones and everything in-between. Built discretely into the bridge pickup mounting ring is a full-function, chromatic tuner. Push it's ON/OFF button and sound is muted and the tuner activated. Also, the Ultra-III's NanoMag Volume knob now doubles as an A/B switch - with no delay and no "pop." The Ultra-III features three outputs. Using the standard 1/4" MONO output, both the Humbuckers and NanoMag are mixed into one signal. Plug another 1/4" cable into it's STEREO output, and the Humbuckers are routed through one cable and the NanoMag the other. In this way, you can send the Humbuckers to your favorite guitar amp and the NanoMag to the PA or an acoustic guitar amp. Using the A/B switch, you can now change "on-the-fly" between the two outputs. The third output is USB. Using a USB cable (included), you can go direct to your computer and use applications such as Native Instruments GuitarRig™ 4LE (software included) to simulate a variety of amplifiers and effects. GuitarRig also features a recorder, a metronome, a tuner and more. Maintaining the same basic specifications of our Standard Plus-tops, including a solid Mahogany body with glued-in Mahogany neck and comfortable SlimTaper™ neck profile, a flame Maple veneer top and Rosewood fingerboard, results in a guitar with classic Les Paul tone and sustain. It's also equipped with our LockTone™ locking Tune-o-matic™ bridge/Stopbar system, as well as Grover™ 16:1 machine heads for tuning accuracy and stability. If you want a versatile professional instrument designed for live performance or studio and capable of both Les Paul crunch and real acoustic-like tones, the Epiphone Ultra-III is it!

**Les Paul® Standard Plus-top** Les Paul changed the world with his "Log" prototype guitar using Epiphone body parts combined with a solid piece of wood. Based upon Les' first solid-body guitar, the Les Paul Standard Plus features a solid Mahogany body, Flame Maple top, Alnico Classic™ Humbucking pickups and the sustain-pumping Tune-o-matic™ bridge/Stopbar tailpiece combination. For over 50 years, the undisputed reigning king of solid-body guitars. (Also available Left-hand, HS)



Les Paul® Standard Plus-tops

les pauls

Epiphone  
**Epiphone**  
 performance is our passion